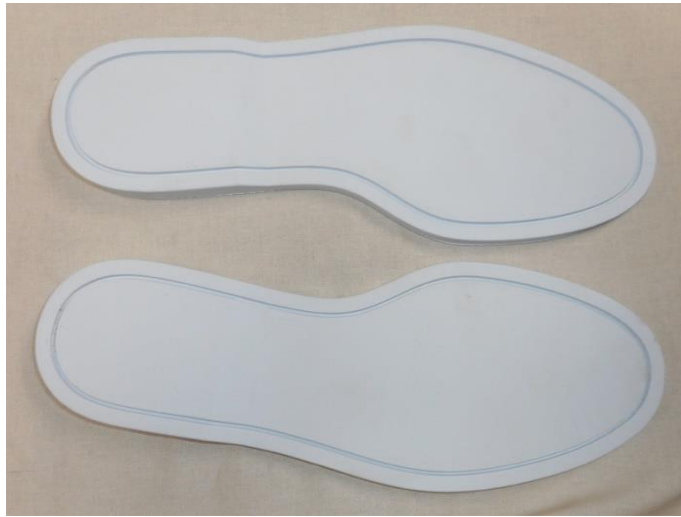




USA Contact: Meramec Group, Inc.  
 338 Ramsey Drive  
 Sullivan, MO 63080  
 Phone +1 573-468-311  
[info@meramec.com](mailto:info@meramec.com)

DR Contact: Meramec DR  
 Carretera Luperon Km 6.5  
 Gurabo, Santiago 510000  
 Dominican Republic  
 Phone 829-520-5626



## Boat Sole

**Description** Men's Rubber Outsole

**Production Location** Dominican Republic

### Physical Properties

| Test Name        | Standards | Unit                 |
|------------------|-----------|----------------------|
| Tensile Strength | > 90      | Kg/cm <sup>2</sup>   |
| Elongation       | > 350     | %                    |
| DIN Abrasion     | ≤ 150     | mm <sup>3</sup> loss |
| Slip Resistance  | 0.9       | SCOF                 |
| Ross Flex        | 125       | Cycles               |
| Specific Gravity | < 1.2     | g/cm <sup>3</sup>    |
| Hardness         | 62 ± 3    | Shore A              |

### Molds

Size Run                      7-13 w/h

Box Pack



USA Contact: **Meramec Group, Inc.**  
 338 Ramsey Drive  
 Sullivan, MO 63080  
 Phone +1 573-468-311  
[info@meramec.com](mailto:info@meramec.com)

DR Contact: **Meramec DR**  
 Carretera Luperon Km 6.5  
 Gurabo, Santiago 510000  
 Dominican Republic  
 Phone 829-520-5626



## Camp Moc

|                            |                      |                      |
|----------------------------|----------------------|----------------------|
| <b>Description</b>         | Men's Rubber Outsole |                      |
| <b>Production Location</b> | Dominican Republic   |                      |
| <b>Physical Properties</b> |                      |                      |
| <b>Test Name</b>           | <b>Standards</b>     | <b>Unit</b>          |
| Tensile Strength           | > 90                 | Kg/cm <sup>2</sup>   |
| Elongation                 | > 350                | %                    |
| DIN Abrasion               | ≤ 150                | mm <sup>3</sup> loss |
| Slip Resistance            | 0.9                  | SCOF                 |
| Ross Flex                  | 125                  | Cycles               |
| Specific Gravity           | < 1.2                | g/cm <sup>3</sup>    |
| Hardness                   | 62 ± 3               | Shore A              |
| <b>Details</b>             |                      |                      |
| Size Run                   | 6 - 11 w/h + 12, 13  |                      |
| Box Pack                   | 12 pair per size     |                      |
|                            |                      |                      |
|                            |                      |                      |



USA Contact: Meramec Group, Inc.  
 338 Ramsey Drive  
 Sullivan, MO 63080  
 Phone +1 573-468-311  
[info@meramec.com](mailto:info@meramec.com)

DR Contact: Meramec DR  
 Carretera Luperon Km 6.5  
 Gurabo, Santiago 510000  
 Dominican Republic  
 Phone 829-520-5626



## Driver

**Description** Men's Rubber Outsole

**Production Location** Dominican Republic

### Physical Properties

| Test Name        | Standards   | Unit                 |
|------------------|-------------|----------------------|
| Tensile Strength | ≥ 120       | Kg/cm <sup>2</sup>   |
| Elongation       | >450        | %                    |
| DIN Abrasion     | ≤ 150       | mm <sup>3</sup> loss |
| Stitch Tear      | > 45        | Kgf/cm               |
| Ross Flex        | < 100       | %                    |
| Specific Gravity | 1,15 ± 0,03 | g/cm <sup>3</sup>    |
| Hardness         | 65+/- 3     | Shore A              |

### Molds

**Size Run** 7-8; 8.5-9.5; 10-11; 11.5-13; 14-15

**Box Pack**



USA Contact: Meramec Group, Inc.  
 338 Ramsey Drive  
 Sullivan, MO 63080  
 Phone +1 573-468-311  
[info@meramec.com](mailto:info@meramec.com)

DR Contact: Meramec DR  
 Carretera Luperon Km 6.5  
 Gurabo, Santiago 510000  
 Dominican Republic  
 Phone 829-520-5626



## Soft Lug

|                            |                        |                      |
|----------------------------|------------------------|----------------------|
| <b>Description</b>         | Women's Rubber Outsole |                      |
| <b>Production Location</b> | Dominican Republic     |                      |
| <b>Physical Properties</b> |                        |                      |
| <b>Test Name</b>           | <b>Standards</b>       | <b>Unit</b>          |
| Tensile Strength           | ≥ 120                  | Kg/cm <sup>2</sup>   |
| Elongation                 | >450                   | %                    |
| DIN Abrasion               | ≤ 150                  | mm <sup>3</sup> loss |
| Stitch Tear                | > 45                   | Kgf/cm               |
| Ross Flex                  | < 100                  | %                    |
| Specific Gravity           | 1,15 ± 0,03            | g/cm <sup>3</sup>    |
| Hardness                   | 65+/- 3                | Shore A              |
| <b>Molds</b>               |                        |                      |
| Size Run                   | 5.5; 6-11 whole        |                      |
| Box Pack                   | 12 pair per size       |                      |
|                            |                        |                      |
|                            |                        |                      |



USA Contact: Meramec Group, Inc.  
 338 Ramsey Drive  
 Sullivan, MO 63080  
 Phone +1 573-468-311  
[info@meramec.com](mailto:info@meramec.com)

DR Contact: Meramec DR  
 Carretera Luperon Km 6.5  
 Gurabo, Santiago 510000  
 Dominican Republic  
 Phone 829-520-5626



## Shore Leave

|                            |                  |                      |
|----------------------------|------------------|----------------------|
| <b>Description</b>         |                  | Men's Rubber Outsole |
| <b>Production Location</b> |                  | Dominican Republic   |
| <b>Physical Properties</b> |                  |                      |
| <b>Test Name</b>           | <b>Standards</b> | <b>Unit</b>          |
| Tensile Strength           | > 90             | Kg/cm <sup>2</sup>   |
| Elongation                 | > 350            | %                    |
| DIN Abrasion               | ≤ 150            | mm <sup>3</sup> loss |
| Slip Resistance            | 0.9              | SCOF                 |
| Ross Flex                  | 125              | Cycles               |
| Specific Gravity           | < 1.2            | g/cm <sup>3</sup>    |
| Hardness                   | 62 ± 3           | Shore A              |
| <b>Molds</b>               |                  |                      |
| Size Run                   | 7-12 w/h + 13    |                      |
| Box Pack                   |                  |                      |
|                            |                  |                      |
|                            |                  |                      |