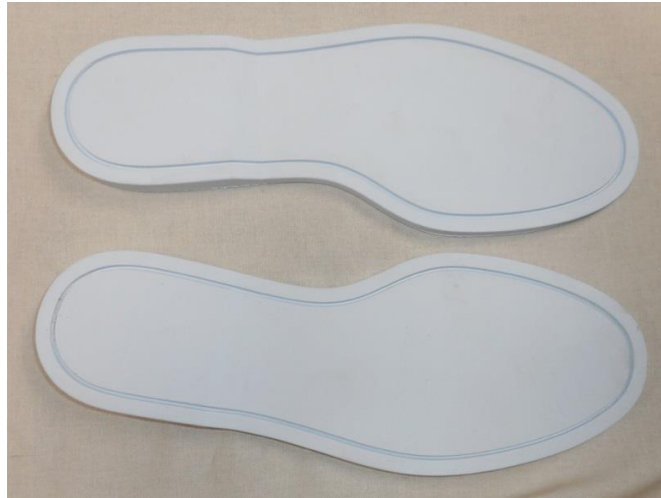




USA Contact: Meramec Group, Inc.
 338 Ramsey Drive
 Sullivan, MO 63080
 Phone +1 573-468-311
info@meramec.com

DR Contact: Meramec DR
 Carretera Luperon Km 6.5
 Gurabo, Santiago 510000
 Dominican Republic
 Phone 829-520-5626



Boat Sole

Description		Men's Rubber Outsole
Production Location		Dominican Republic
Physical Properties		
Test Name	Standards	Unit
Tensile Strength	> 90	Kg/cm ²
Elongation	> 350	%
DIN Abrasion	≤ 150	mm ³ loss
Slip Resistance	0.9	SCOF
Ross Flex	125	Cycles
Specific Gravity	< 1.2	g/cm ³
Hardness	62 ± 3	Shore A
Molds		
Size Run	7-13 w/h	
Box Pack		
X-factory Price	\$3.18 White	



USA Contact: Meramec Group, Inc.
 338 Ramsey Drive
 Sullivan, MO 63080
 Phone +1 573-468-311
info@meramec.com

DR Contact: Meramec DR
 Carretera Luperon Km 6.5
 Gurabo, Santiago 510000
 Dominican Republic
 Phone 829-520-5626



Camp Moc

Description Men's Rubber Outsole

Production Location Dominican Republic

Physical Properties

Test Name	Standards	Unit
Tensile Strength	> 90	Kg/cm ²
Elongation	> 350	%
DIN Abrasion	≤ 150	mm ³ loss
Slip Resistance	0.9	SCOF
Ross Flex	125	Cycles
Specific Gravity	< 1.2	g/cm ³
Hardness	62 ± 3	Shore A

Details

Size Run	6 - 11 w/h + 12, 13
Box Pack	12 pair per size
X-factory Price	\$3.18 White; \$3.11 Honey; \$3.11



USA Contact: Meramec Group, Inc.
 338 Ramsey Drive
 Sullivan, MO 63080
 Phone +1 573-468-311
info@meramec.com

DR Contact: Meramec DR
 Carretera Luperon Km 6.5
 Gurabo, Santiago 510000
 Dominican Republic
 Phone 829-520-5626



Driver

Description Men's Rubber Outsole

Production Location Dominican Republic

Physical Properties

Test Name	Standards	Unit
Tensile Strength	≥ 120	Kg/cm ²
Elongation	>450	%
DIN Abrasion	≤ 150	mm ³ loss
Stitch Tear	> 45	Kgf/cm
Ross Flex	< 100	%
Specific Gravity	1,15 ± 0,03	g/cm ³
Hardness	65+/- 3	Shore A

Molds

Size Run 7-8; 8.5-9.5; 10-11; 11.5-13; 14-15

Box Pack

X-factory Price \$2.32 Black



USA Contact: Meramec Group, Inc.
 338 Ramsey Drive
 Sullivan, MO 63080
 Phone +1 573-468-311
info@meramec.com

DR Contact: Meramec DR
 Carretera Luperon Km 6.5
 Gurabo, Santiago 510000
 Dominican Republic
 Phone 829-520-5626



Soft Lug

Description	Women's Rubber Outsole	
Production Location	Dominican Republic	
Physical Properties		
Test Name	Standards	Unit
Tensile Strength	≥ 120	Kg/cm ²
Elongation	>450	%
DIN Abrasion	≤ 150	mm ³ loss
Stitch Tear	> 45	Kgf/cm
Ross Flex	< 100	%
Specific Gravity	1,15 ± 0,03	g/cm ³
Hardness	65+/- 3	Shore A
Molds		
Size Run	5.5; 6-11 whole	
Box Pack	12 pair per size	
X-factory Price	\$3.11 Honey; \$2.80 Black	



USA Contact: Meramec Group, Inc.
 338 Ramsey Drive
 Sullivan, MO 63080
 Phone +1 573-468-311
info@meramec.com

DR Contact: Meramec DR
 Carretera Luperon Km 6.5
 Gurabo, Santiago 510000
 Dominican Republic
 Phone 829-520-5626



Shore Leave

Description		Men's Rubber Outsole
Production Location		Dominican Republic
Physical Properties		
Test Name	Standards	Unit
Tensile Strength	> 90	Kg/cm ²
Elongation	> 350	%
DIN Abrasion	≤ 150	mm ³ loss
Slip Resistance	0.9	SCOF
Ross Flex	125	Cycles
Specific Gravity	< 1.2	g/cm ³
Hardness	62 ± 3	Shore A
Molds		
Size Run	7-12 w/h + 13	
Box Pack		
X-factory Price	\$2.94 Honey	